

SPECIFICATIONS

ELECTRICAL

FREQUENCY RANGE: _____ DC TO 6.0 GHz

STANDARD VALUES _____ 0-12, 15, 20, 30 dB

INSERTION LOSS: _____ 0 + 0.3 dB
 1-6 dB ± 0.5 dB
 7-13 & 20 dB ± 0.5 dB
 25 & 30 dB ±0.75 dB

VSWR(MAX): _____ 1.15:1 (DC TO 2.5 GHz)
 (2.5 TO 6.0 GHz)
 0-6dB 1.20
 7-13dB 1.25
 15, 20dB 1.30
 25 & 30dB 1.35

POWER _____ PEAK: 200 W
 AVERAGE: 2 W @ 25°C

IMPEDANCE _____ 50 OHMS

OPERATING TEMP RANGE _____ -65 TO +125°

MECHANICAL

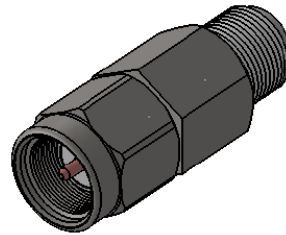
WEIGHT _____ 0.21 OZ MAX.

NOTES:
 1. "XX" EQUALS THE dB VALUE ON THE WORK ORDER.
 THE "XX" IS TO BE REPLACED WITH THE DOUBLE DIGIT dB VALUE.

EXAMPLE: 2082-6346-03 "XX" = 03dB
 2082-6346-30 "XX" = 30dB

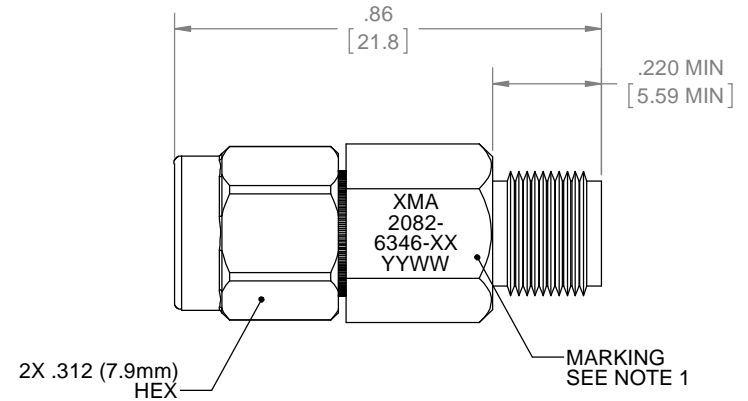
MARKING

PART LOOKS LIKE PRODUCT IMAGE ABOVE.
 PART MARKING ORIENTATION AND FORMAT AS SHOWN.
 REPLACE dB WITH APPROPRIATE TWO DIGIT dB VALUE.
 MARKING TO BE AS LARGE AS POSSIBLE, CLEAR, READABLE.
 YYWW EQUALS DATE CODE.



DASH # -dB-	XX VALUE
01	01
02	02
03	03
04	04
05	05
06	06
07	07
08	08
09	09
10	10
13	13
20	20
25	25
30	30

REVISIONS				
REV	DESCRIPTION	ECO #	DATE	APPROVED
-	INITIATED	14-154	04/14/14	T.KUHN
A	ADDED DATE CODE	15-042	2/19/15	T.KUHN
B	ADDED 13dB	15-170	6/12/15	T.KUHN
C	CLARIFIED MARKING	15-217	7/13/15	T.KUHN



QTY.	PART NUMBER	DESCRIPTION	ITEM NO.
X	2082-6346-dB	ATTENUATOR, SMA-m/f, DC-6GHz, 2 WATT	
1	TA-2082-6346-dBU	ATTENUATOR, SMA-m/f, DC-6GHz, 2 WATT, UNMARKED	1

DRAWING PRACTICES PER ANSI-Y-14.5 MIL-STD-100 & 1000

DIMENSIONS ARE IN INCHES AND APPLY BEFORE / AFTER PROCESSING

SURFACE ROUGHNESS μ INCHES 63

FINISH:

MATERIAL:

NOTE:
 THIS DRAWING INCORPORATES THIRD ANGLE PROJECTION.

INTERPRET IAW ANSI Y14.5-1982

UNLESS OTHERWISE SPECIFIED TOLERANCES IN:

DECIMALS	INCH	[MM]
.X"	.03"	[.76]
.XX"	.010"	[.25]
.XXX"	.005	[.127]
.XXXX"	.0005"	[.013]

ANGLES ±0°30'

REMOVE ALL BURRS/SHARP W/ BREAK / R OF .003" TO .0005" UNLESS OTHERWISE NOTED DIAS CONCENTRIC <.003 T.I.R.

DO NOT SCALE PRINT

DRAWN _____ DATE _____

CHECKED _____ DATE _____

ENG. APPR. _____ DATE _____

THESE DRAWINGS AND SPECIFICATIONS ARE THE PROPERTY OF XMA CORP. OR OMNI SPECTRA AND SHALL NOT BE REPRODUCED, COPIED NOR USED - IN WHOLE OR IN PART - AS A BASIS FOR THE MANUFACTURE OR SALE OF OTHER ITEMS WITHOUT THE EXPRESS WRITTEN PERMISSION OF XMA CORP.

Phone: 603-222-2256 Fax: 603-222-2259
 150 Dow Street, Manchester, NH 03101

TITLE
ATTENUATOR, SMA-m/f, DC-6GHz, 2 WATT

SIZE	CAGE CODE	DRAWING NUMBER	REV
B	3HT76	2082-6346-dB	C

SCALE _____ PLATED AREA SQ. IN _____ SHEET 1 OF 1