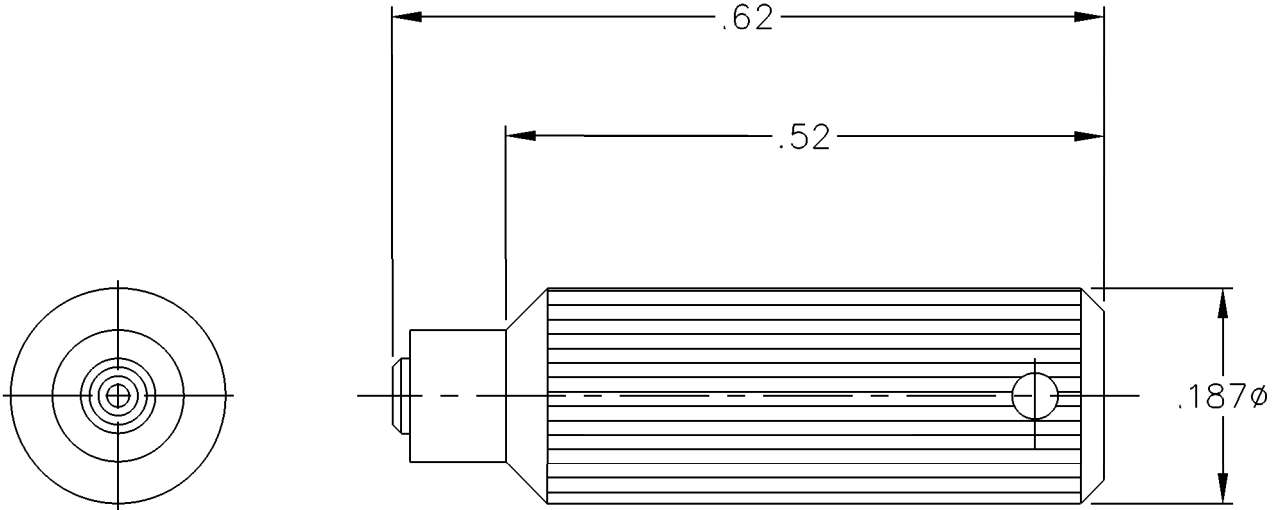


| REV. | DESCRIPTION | DATE | BY |
|------|------------------|----------|-----|
| E | SEE ECO GM-10797 | 11/24/99 | MJC |

MATERIAL AND FINISH

GPO TOOL:

CRES 303 PER ASTM A 484
AND ASTM A 582 OR ASTM A 555
AND ASTM A 581. PASSIVATE PER
MIL-F-14072 E300.



This drawing and any data contained therein is the property of Gilbert Engineering Co., Inc., and constitutes and contains proprietary and confidential information. Neither receipt nor possession of this drawing confers or transfers any right to duplicate, use or disclose any information contained herein except as expressly authorized by Gilbert Engineering Co. Inc.

| | | | |
|----------------------------------|--------------------|---|----------------------|
| ALL DIMENSIONS IN INCHES | | CAT. NO. 9001-903-1 | CODE IDENT NO. 82316 |
| GILBERT ENGINEERING CO., INC. | | | |
| DATE | TITLE | OUTLINE DRAWING FOR GPO SHROUD CENTER TOOL FOR .015 C/C | |
| 11/24/99 | | | |
| DRAWN: MJC | | DWG. NO. OL-9001-903-1 | REV E |
| ASSEMBLY PROCEDURES: NONE | | | |
| SOURCE FILE: MECR# 1311 | SHT. 1 OF 1 | | |