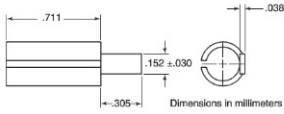


# K CONNECTOR®

DC to 40 GHz

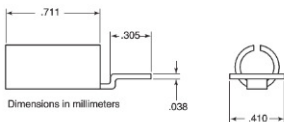
Frequency range	DC to 40 GHz
Material	0.025 mm heat-treated BeCu
Plating	Bondable gold over nickel



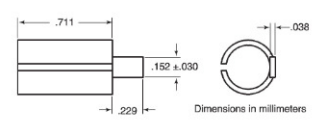
**K110-1-R<sup>①</sup>** Microstrip and Coplanar Waveguide



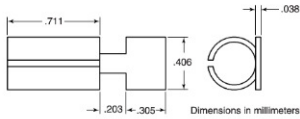
**K110-3-R<sup>①</sup>** Microstrip



**K110-2-R<sup>①</sup>** Stripline



**S110-1** Microstrip and Coplanar Waveguide for 0.38 mm glass feedthru center conductor



**S110-3** Microstrip and Coplanar Waveguide for 0.38 mm glass feedthru center conductor

① Use with 01-108 Drill and Tap Set

## Ordering information

Please specify model/order number, name, and quantity when ordering.

Model/Order No.	Name
01-101A	K Connector® (evaluation kit)
<b>01-103</b>	Soldering fixture for sparkplug launcher glass bead
01-104	Drill and tap set
01-105A	Male and female sparkplug torquing kit
01-106	Soldering fixture for flange launcher glass bead
01-107F	Cable sleeve soldering fixture, female connector
01-107M	Cable sleeve soldering fixture, male connector
01-108	Drill and tap set
01-118	Cable assembling fixture for K118 semi-rigid coax cable
01-201	Torque wrench, for SMA, 3.5mm, and K Connector and V Connector
01-204	Anritsu stainless steel connector wrench
01-524	0.8mm-6mm torque wrench
01-525	6X7mm end wrench
K110-1-R*	Microstrip stress relief contact
K110-2-R*	Stripline stress relief contact
K110-3-R*	Microstrip stress relief contact
K101M-R	K(m) in-line cable connector, DC to 40 GHz for K118 cable
K101M-085-R	K(m) in-line cable connector, DC to 40 GHz for V085 cable
K101F-R	K(f) in-line cable connector, DC to 40 GHz
K102M-R	K(m) sparkplug launcher connector, DC to 40 GHz
K102F-R	K(f) sparkplug launcher connector, DC to 40 GHz
K103M-R	K(m) flange launcher connector, DC to 40 GHz, 2 mounting holes
K103F-R	K(f) flange launcher connector, DC to 40 GHz, 2 mounting holes
K104M-R	K(m) flange launcher connector, DC to 40 GHz, 4 mounting holes
K104F-R	K(f) flange launcher connector, DC to 40 GHz, 4 mounting holes
K118	Coaxial cable, 1.5m of 3.00 mm semi-rigid cable for K101 series connector
S110-1*	Microstrip and coplanar waveguide stress relief contact for 0.38 mm glass feedthru center conductor
S110-3*	Microstrip and coplanar waveguide stress relief contact for 0.38 mm glass feedthru center conductor

\*Sold in multiples of 10 only.