

PAGE 1/2

ISSUE 09-03-21

SERIE : SPnT

PART NUMBER : R574492085

RF CHARACTERISTICS

Number of ways : 10
Frequency range : 0 - 18 GHz
Impedance : 50 Ohms

| Frequency (GHz) | DC - 3 | 3 - 8 | 8 - 12.4 | 12.4 - 15.5 | 15.5 - 18 |
|--------------------|---------|---------|----------|-------------|-----------|
| VSWR max | 1.20 | 1.30 | 1.40 | 1.50 | 1.70 |
| Insertion loss max | 0.20 dB | 0.30 dB | 0.40 dB | 0.50 dB | 0.70 dB |
| Isolation min | 80 dB | 70 dB | 60 dB | 60 dB | 55 dB |
| Average power (*) | 240 W | 150 W | 120 W | 110 W | 100 W |

TERMINATION IMPEDANCE : 50 Ohms
TERM. AVG. POWER AT 25° C : 1 W per termination / 3 W total power

ELECTRICAL CHARACTERISTICS

Actuator : LATCHING
Nominal current ** : 1280 mA
Actuator voltage (Vcc) : 12V (10.2 to 13V)
Terminals : 25 pins D-SUB male connector
Indicator rating : 1 W / 30 V / 100 mA
Self cut-off time : 40 ms < CT < 120 ms
BCD inputs (E) - High level : 3.5 to 5.5 V / 800µA at 5.5 V
- Low level : 0 to 1.5 V / 20µA at 0.8 V

MECHANICAL CHARACTERISTICS

Connectors : SMA female per MIL-C 39012
Life : 2 million cycles per position
Switching Time*** : < 50 ms
Construction : Splashproof
Weight : < 360 g

ENVIRONMENTAL CHARACTERISTICS

Operating temperature range : -40°C to +85°C
Storage temperature range : -55°C to +85°C

(* Average power at 25°C per RF Path)

(** At 25° C ±10%)

(*** Nominal voltage ; 25° C)



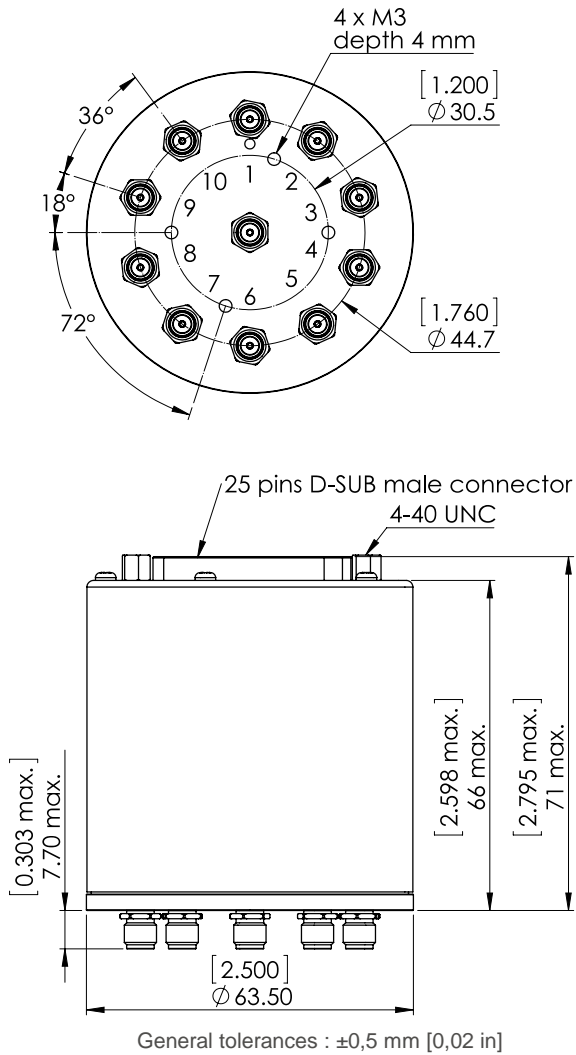
PAGE 2/2

ISSUE 09-03-21

SERIE : SPnT

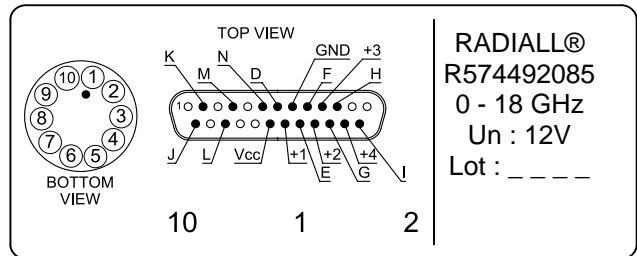
PART NUMBER : R574492085

DRAWING



| BCD TRUTH TABLE | | | | | |
|-----------------|----|----|----|-------------------------------|------|
| E4 | E3 | E2 | E1 | RF continuity | Ind. |
| 0 | 0 | 0 | 0 | All ports open (Forced Reset) | -- |
| 0 | 0 | 0 | 1 | IN \leftrightarrow 1 | D.E |
| 0 | 0 | 1 | 0 | IN \leftrightarrow 2 | D.F |
| 0 | 0 | 1 | 1 | IN \leftrightarrow 3 | D.G |
| 0 | 1 | 0 | 0 | IN \leftrightarrow 4 | D.H |
| 0 | 1 | 0 | 1 | IN \leftrightarrow 5 | D.I |
| 0 | 1 | 1 | 0 | IN \leftrightarrow 6 | D.J |
| 0 | 1 | 1 | 1 | IN \leftrightarrow 7 | D.K |
| 1 | 0 | 0 | 0 | IN \leftrightarrow 8 | D.L |
| 1 | 0 | 0 | 1 | IN \leftrightarrow 9 | D.M |
| 1 | 0 | 1 | 0 | IN \leftrightarrow 10 | D.N |

LABEL



SCHEMATIC DIAGRAM

