

21-146-1000-01

NOTES:

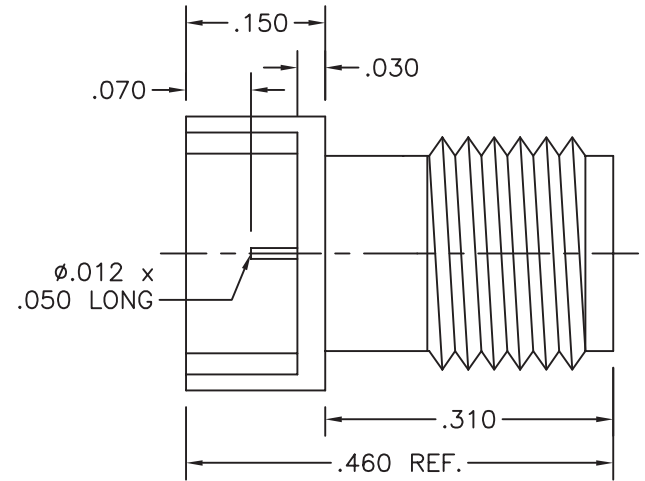
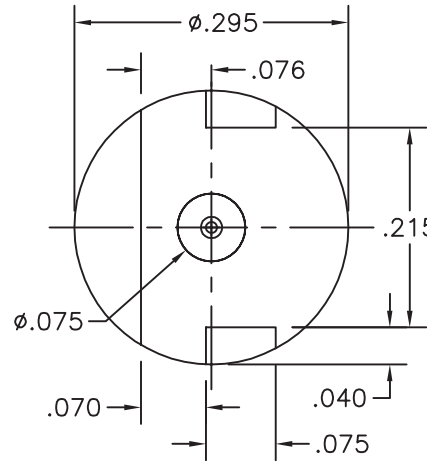
Materials: A484 and A582. Beryllium Copper per ASTM-B-196, QQ-C-530
 PTFE Fluorocarbon per ASTM-D-1710 Type 1


Finish: Center Conductors, Body and solder components shall be plated per MIL-G-45204
 Type II, Class 1 over Nickel plate per QQ-N-290.

Frequency: DC-27 GHz

VSWR: 1.2 TO 27 GHz

Insertion Loss: .05(SQRT(F(GHz)))



LTR	DESCRIPTION	DATE	APPR.	DRAWN LRH	CHECKED	USED ON 21-146-1000-01	 SRI CONNECTOR GAGE CO. 751 NORTH DRIVE MELBOURNE FL. 32934	
-	REL	02/01		APPR.	SCALE			
				UNLESS OTHERWISE SPECIFIED: 1. REMOVE ALL BURRS 2. BREAK ALL CORNERS & EDGES .005 R. MAX 3. CHAMFER 1st & LAST THREADS 45° 4. SURFACE FINISHED 32/ UNLESS OTHERWISE SPECIFIED. 5. DIAMETERS ON COMMON CENTERS TO BE CONCENTRIC WITHIN .002 T.I.R. 6. ALL DIMENSIONS ARE AFTER PLATING.		MATERIAL	TITLE	
				DIMENSIONS ARE IN INCHES TOLERANCES		FINISH	SMA FEMALE PCB MOUNT	
				DECIMALS .X ±.030 .XX ±.010 .XXX +.005	FRACTIONAL ± 1/64	ANGULAR .X° ±1°0' .X°X' ±15'		SHEET 1
						SIZE A	FSCM NO. OHMO1	DWG. NO. 21-146-1000-01