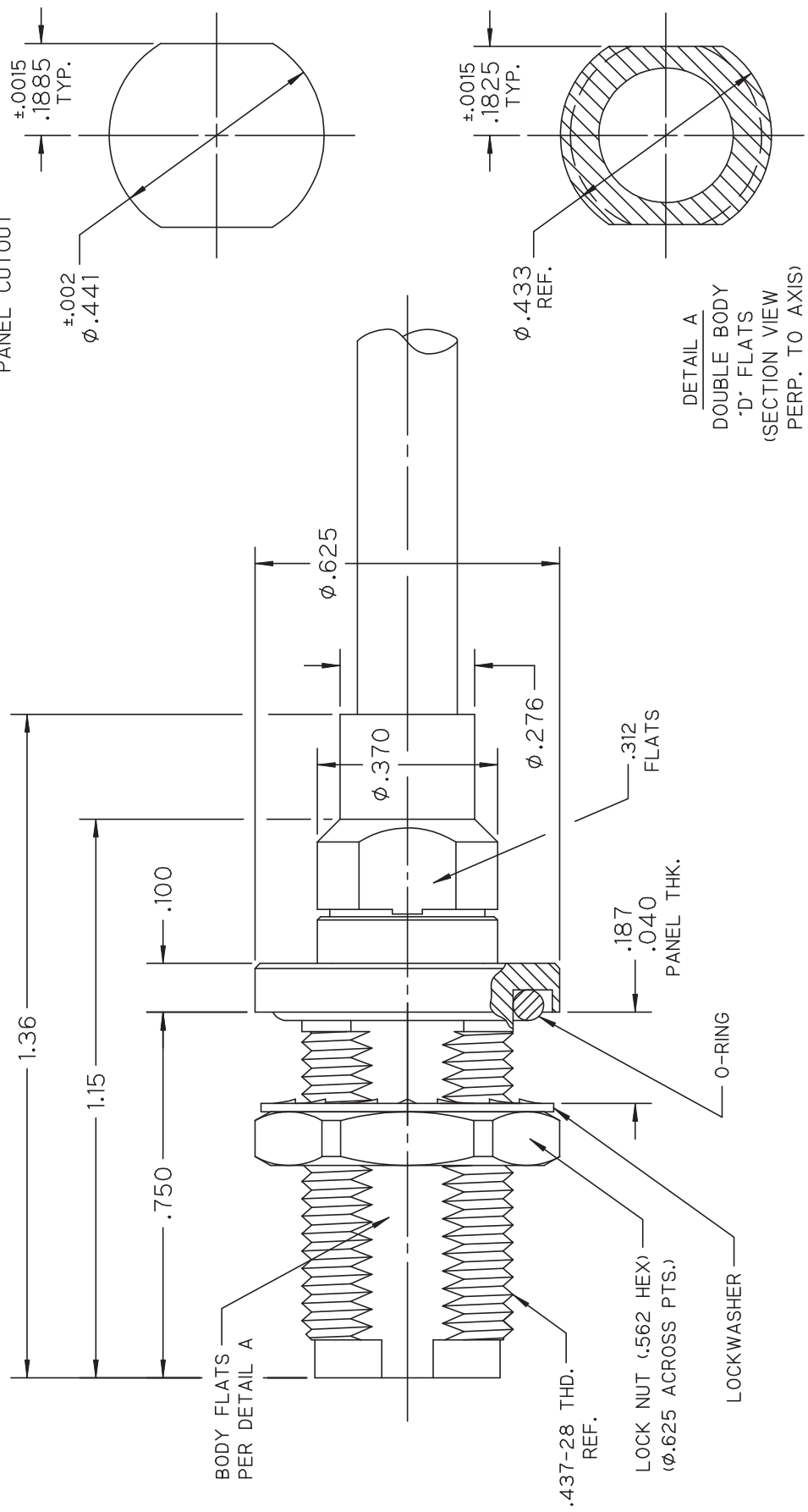


***** THIS DRAWING AND ITS CONTENTS ARE THE SOLE PROPERTY OF PRECISION CONNECTOR INC. AND ARE SUBJECT TO CHANGE WITHOUT NOTICE UNLESS OTHERWISE SPECIFIED *****

REV.	DESCRIPTION	DATE	BY	APPVD
A	INITIAL RELEASE	05/19/10	RDE	MJK

NOTES :

1. TNCA JACK INTERFACE PER MIL-STD-348, FIGURE 313-4.
2. MOUNTING HOLE AND BODY 'D' FLAT MEET MIL-PRF-39012/31B EXCEPT CONFIGURATION IS DOUBLE 'D'.



TOLERANCES UNLESS OTHERWISE SPECIFIED	DRAWN BY: RDE	DESCRIPTION: TNCA BULKHEAD JACK, SOLDER CLAMP FOR SEMIFLEX HP190 CABLE	REV: A
	DATE: 05/19/10	SHEET NO. 1 OF 2	ASSEMBLY NUMBER 3305-0L
.XX ± .02	CAGE CODE 4MJR5	SCALE 3:1	
.XXX ± .005			
.XXXX ± .0005			
ANGLES ± 2°			

***** THIS DRAWING AND ITS CONTENTS ARE THE SOLE PROPERTY OF PRECISION CONNECTOR *****
 INC. AND ARE SUBJECT TO CHANGE WITHOUT NOTICE UNLESS OTHERWISE SPECIFIED

REV.	DESCRIPTION	DATE	BY	APPVD
A	INITIAL RELEASE	05/19/10	RDE	MJK

NOTES :

1.0 MATERIALS:

- 1.1 BODY, CLAMP NUT & LOCK NUT: STEEL, CORROSION RESISTANT PER ASTM-A582, UNS NO. S30300.
- 1.2 LOCKWASHER: STEEL, CORROSION RESISTANT PER ASTM-A313, UNS NO. S30200.
- 1.3 CENTER COND.: BERYLLIUM COPPER PER ASTM-B196, UNS C17300.
- 1.4 SOLDER FERRULE: BRASS PER ASTM-B16, UNS C36000.
- 1.5 O-RING(S): SILICONE RUBBER PER A-A-59588.
- 1.6 DIELECTRIC BEAD: POLYETHERIMIDE THERMOPLASTIC (ULTEM 1000) PER ASTM-D5205.

2.0 FINISHES:

- 2.1 BODY, LOCKWASHER, CLAMP NUT & LOCK NUT: PASSIVATE PER SAE-AMS-2700.
- 2.2 CENTER CONTACT & SOLDER FERRULE: GOLD PLATE PER ASTM-B488, 50 MICROINCHES MIN. THK. OVER ELECTROLYTIC NICKEL PLATE PER ASTM-B689, 50 MICROINCHES MIN. THK.
- 2.3 O-RING(S), INSULATOR & DIELECTRIC BEAD: NONE.

3.0 ELECTRICAL CHARACTERISTICS :

FREQUENCY RANGE : DC TO 18 GHZ
 INSERTION LOSS : .06 X SQRT(Fghz)
 VSWR : 1:12:1 MAX. DC TO 12.4 GHZ
 1:16:1 MAX. 12.4 TO 18 GHZ



Precision Connector, Inc.

TOLERANCES UNLESS OTHERWISE SPECIFIED	DRAWN BY: RDE	DESCRIPTION	REV
.XX ± .02	DATE: 05/19/10	TNCA BULKHEAD JACK, SOLDER CLAMP FOR SEMFLEX HP190 CABLE	A
.XXX ± .005	CAGE CODE	SHEET NO.	ASSEMBLY NUMBER
.XXXX ± .0005	4MJR5	3:1	2 OF 2
ANGLES ± 2°			3305-0L