

NOTES:

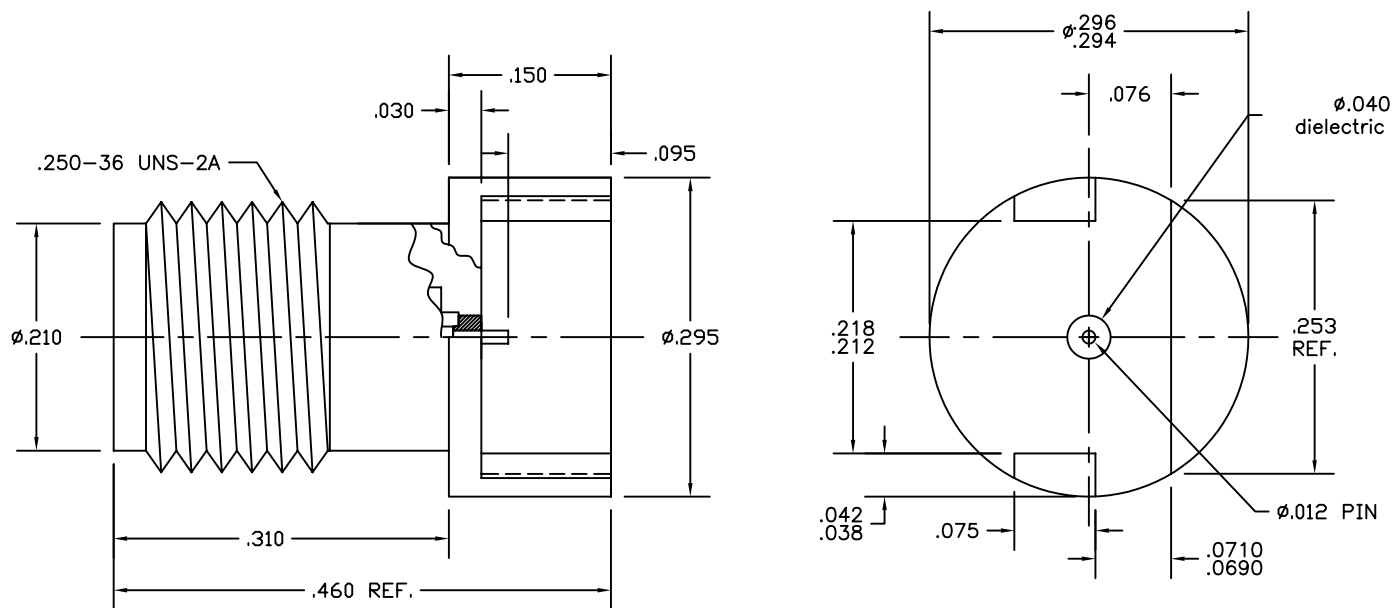
25-146-1000-92


**Materials:** Beryllium Copper per ASTM-B-196, QQ-C-530  
Ultem 1000

**Finish:** Center Conductors, Body, Body components and solder components shall be plated per MIL-G-45204 Type II, Class 1 over Nickel plate per QQ-N-290.

**Frequency:** DC-40 GHz  
1.25 TO 40 GHz

**Insertion Loss:**  $.05\sqrt{\text{Frequency}}$



LTR	DESCRIPTION	DATE	APPR.	DRAWN <b>LMW</b>	CHECKED	USED ON	 SRI CONNECTOR GAGE CO. 751 NORTH DRIVE MELBOURNE FL. 32934		
-	REL	8/04		APPR.	SCALE	25-146-1000-92			
				UNLESS OTHERWISE SPECIFIED: 1. REMOVE ALL BURRS 2. BREAK ALL CORNERS & EDGES .005 R. MAX 3. CHAMFER 1st & LAST THREADS 45° 4. SURFACE FINISHED 32/ UNLESS OTHERWISE SPECIFIED. 5. DIAMETERS ON COMMON CENTERS TO BE CONCENTRIC WITHIN .002 T.I.R. 6. ALL DIMENSIONS ARE AFTER PLATING.		MATERIAL	TITLE		
				DIMENSIONS ARE IN INCHES TOLERANCES		FINISH	2.9mm JACK PCB MOUNT		
				DECIMALS    FRACTIONAL    ANGULAR .X            ±.030                            .X°    ±1°0' .XX          ±.010                            .X°X' ±15' .XXX        +.005                            ± 1/64	SIZE	FSCM NO.		SHEET	DWG. NO.
						A	OHMO1	1	25-146-1000-92