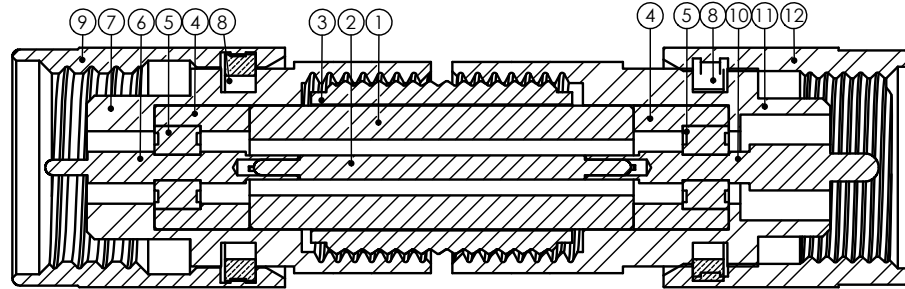
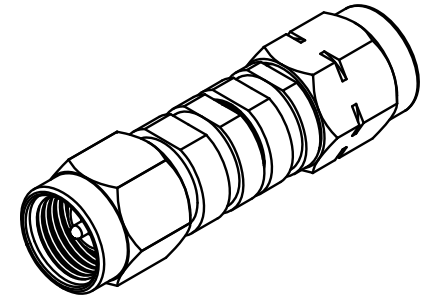
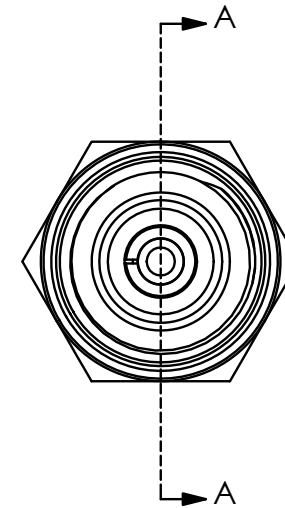


| ITEM NO. | PART NUMBER | DESCRIPTION | QTY. |
|----------|----------------|------------------------------|------|
| 1 | TM45-000041-00 | SPACER ADAPTERS | 1 |
| 2 | TM45-000020-00 | CENTER CONDUCTOR ADAPTERS | 1 |
| 3 | TM45-000080-00 | PASSIVATED THREADED COUPLING | 1 |
| 4 | TM45-000040-00 | SPACER FOR INSULATOR | 2 |
| 5 | TM45-000030-00 | INSULATOR | 2 |
| 6 | TM45-04M020-00 | CENTER CONDUCTOR 2.4mm MALE | 1 |
| 7 | TM45-04M010-00 | PASSIVATED BODY 2.4mm MALE | 1 |
| 8 | TM45-000070-00 | RETAINING RING | 2 |
| 9 | TM45-000091-00 | NUT | 1 |
| 10 | TM45-05M020-00 | CENTER CONDUCTOR 3.5mm MALE | 1 |
| 11 | TM45-05M010-00 | PASSIVATED BODY 3.5mm MALE | 1 |
| 12 | TM45-000090-00 | NUT 3.5mm, 2.92mm MALE | 1 |

| REVISION | | | |
|----------|-----------------|------------|-----|
| REV. | DESCRIPTION | DATE | BY |
| - | INITIAL RELEASE | 07/31/2019 | TDR |
| | | | |
| | | | |



SECTION A-A
SCALE 8 : 1



NOTE(S):

- INSTALL AND TEST PER "MW ADAPTER & CONNECTOR ASSY PROCEDURE", TM99-0008-00.
- VSWR, MAX. 1.18:1 @ 26.5GHZ

| APPLICABLE CARLISLE IT DOCUMENTS | | |
|----------------------------------|--------------|--------------|
| WORK STANDARD | PROD INSTRUC | ASSY INSTRUC |
| NA | NA | NA |
| - | - | - |

NOTICE
THIS DRAWING EMBODIES A CONFIDENTIAL PROPRIETARY DESIGN ORIGINATED BY CARLISLE INTERCONNECT TECHNOLOGIES & ALL DESIGN, MANUFACTURING, REPRODUCTION, USE & SALE RIGHTS REGARDING THE SAME, ARE EXPRESSLY RESERVED. IT IS SUBMITTED UNDER A CONFIDENTIAL RELATIONSHIP FOR A SPECIFIED PURPOSE & THE RECIPIENT AGREES BY ACCEPTING THIS DRAWING NOT TO SUPPLY OR DISCLOSE ANY INFORMATION REGARDING IT TO ANY UNAUTHORIZED PERSON TO INCORPORATE IN OTHER PROJECTS ANY SPECIAL FEATURES PECULIAR TO THIS DESIGN. ALL PATENT RIGHTS HERETO ARE EXPRESSLY RESERVED BY CARLISLE INTERCONNECT TECHNOLOGIES, KENT, WA 98032.

| TOLERANCES AND NOTES | |
|---|-------------------------|
| EXCEPT AS NOTED | |
| DIMENSIONS ARE IN INCHES. | |
| LINEAR $XX \pm .015$ | ANGULAR $\pm 1/2^\circ$ |
| FRACTION $\pm 1/32$ | |
| 1. MACHINE FINISH: $\sqrt{\text{RMS}}$ | |
| 2. BREAK ALL SHARP EDGES .003 MAX. | |
| 3. MACHINED FILLETS .005 MAX. | |
| 4. MACHINED SURFACES SQUARE TO RESPECTIVE AXIS WITHIN .005 INCHES PER INCH. | |
| 5. MACHINED DIAMETERS CONCENTRIC WITHIN .002 TLR. | |
| 6. DIMENSIONS TO BE MET BEFORE PLATING. | |
| 7. CHAMFER ALL THREADS 45°. | |
| 8. THREADS PER H-28 | |
| 9. REMOVE FRAYED EDGES ON TEFLON. | |
| 10. REMOVE ALL BURRS. | |

| MATERIAL | | SIZE | SPECIFICATION | PROCUREMENT |
|-------------------|-----------|---|---------------|-------------|
| APPROVAL INITIALS | DATE | | | |
| DRAWN BY | MTV | 03.02.18 | | |
| CHECKED BY | - | - | | |
| TEST ENGR | - | - | | |
| QUALITY | - | - | | |
| DESIGN ENGR | MTV | 03.02.18 | | |
| MFG ENGR | - | - | | |
| TITLE | | CARLISLE Interconnect Technologies Kent, WA 98032 | | |
| SCALE | | MW ADAPTER 2.4mm MALE - 3.5mm MALE | | |
| SIZE | CAGE CODE | DRAWING NO. | SHEET | OF |
| C | 7M924 | TMA -4MS-5MS-00 | 1 | 1 |
| REV. | - | | | |