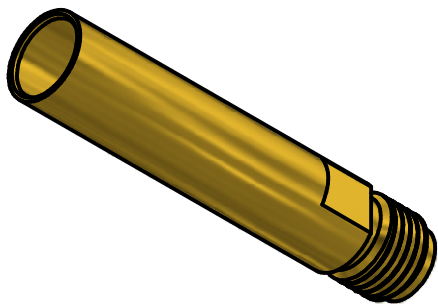


NOTES:

1. DESIGN AND INTERFACE PER IDS-78 & 05.
2. ELECTRICALS:
 - 2.1 IMPEDANCE: 50 OHMS
 - 2.2 FREQUENCY: DC TO 32 GHz.
 - 3.2 VSWR: 1.30:1 TO 26.5 GHz
1.35:1 TO 32 GHz.
3. FOR TESTING ONLY, NOT FOR USE IN A 38999 HOUSING.



MATERIAL:				UNLESS OTHERWISE SPECIFIED, PALCO WORKMANSHIP STANDARDS APPLY. DIMENSIONS IN INCHES OR (METRIC). DO NOT SCALE PRINTS TOLERANCES ARE: FRACTIONS: ± 1/64 DECIMALS: .XX ± .01 .XXX ± .005 ANGLES: ± 1/2° THE INFORMATION IN THIS DOCUMENT IS CONFIDENTIAL AND PROPRIETARY AND MAY NOT BE USED FOR ANY PURPOSE WITHOUT THE WRITTEN CONSENT OF PALCO.	APPROVALS DATE		PALCO CONNECTOR 22 GREAT HILL RD., NAUGATUCK, CT 06770			
DRAWN		J. Maturo			08/01/16		TITLE 38999 SIZE 8 PkZ RECEPTACLE TO 3.5mm RECEPTACLE ADAPTOR			
CHECKED		JEM			08/01/16					
QA							SIZE FSCM DWG NO		REV PLATING OPT.	
MFG						A 58167		7805-1100-00		
ENGINEER		JEM		08/01/16		SCALE		F.S.R. #		
APPROVED		R.M.B.		08/01/16		SHEET 1 OF 1				
REL.PER ECN 12346 REV. DESCRIPTION DATE APPR.		8/1/2016 RMB		08/01/16 RMB		SHEET 1 OF 1				