

SPECIFICATIONS

ELECTRICAL

FREQUENCY RANGE \_\_\_\_\_ DC - 67 GHz

VSWR  
 DC - 50 GHz \_\_\_\_\_ 1.35:1 MAX  
 50 - 67 GHz \_\_\_\_\_ 1.35:1 TYPICAL

POWER (AVG. MAX.) \_\_\_\_\_ 20 Watts @25°C

IMPEDANCE \_\_\_\_\_ 50 OHMS

RF LEAKAGE \_\_\_\_\_ >90 dBc

OPERATING TEMP. RANGE \_\_\_\_\_ -55 - 125°C

PHASE MATCHING \_\_\_\_\_ ±10°(TO P/N's 6782-0000-00 AND 6781-0000-00)

MATERIAL AND FINISH:

HOUSING, COUPLING NUT \_\_\_\_\_ GOLD PLATED STAINLESS STEEL

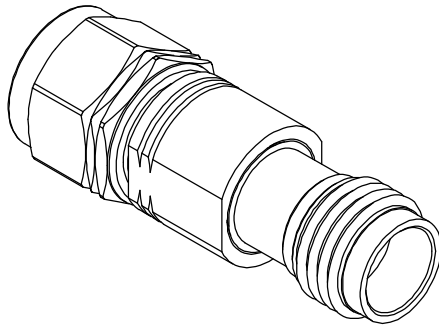
CONTACT \_\_\_\_\_ GOLD PLATED BERYLLIUM COPPER

DIELECTRIC \_\_\_\_\_ PTFE

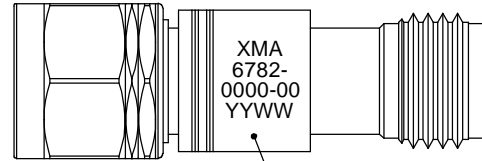
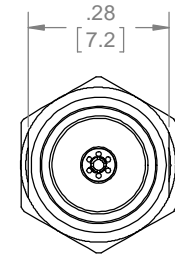
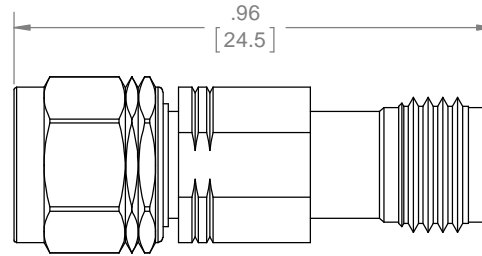
MARKING

PART LOOKS LIKE PRODUCT IMAGE ABOVE.  
 PART MARKING ORIENTATION AND FORMAT AS SHOWN.  
 MARKING TO BE AS LARGE AS POSSIBLE, CLEAR, READABLE.  
 YYWW EQUALS DATE CODE.

NOTES: UNITS TESTED TO 50GHz, DESIGN VERIFIED TO 67GHz



REVISIONS				
REV	DESCRIPTION	ECO #	DATE	APPROVED
X1	PRELIMINARY RELEASE		4/13/15	T.KUHN
X2	REVISED MARKING & SPECIFICATIONS	15-ER017	10/9/15	T.KUHN



MARKING AREA

QTY.	PART NUMBER	DESCRIPTION	ITEM NO.
X	6781-0000-00	ADAPTER, 1.85mm-m/f, DC-67 GHz, 20W	
1	TA-6781-0000-00U	ASSY, ADAPTER, 1.85mm-m/f, DC-67 GHz, 20W, UNMARKED	1

DRAWING PRACTICES PER ANSI-Y-14.5 MIL-STD-100 & 1000	
DIMENSIONS ARE IN INCHES AND APPLY BEFORE / AFTER PROCESSING	
SURFACE ROUGHNESS	63
FINISH:	
SEE NOTES	
MATERIAL:	
SEE NOTES	
NOTE: THIS DRAWING INCORPORATES THIRD ANGLE PROJECTION.	
INTERPRET IAW ANSI Y14.5-1982	

UNLESS OTHERWISE SPECIFIED TOLERANCES IN:	
DECIMALS	INCH [MM]
.X"	.05" [1.27]
.XX"	.03" [.76]
.XXX"	.010" [.25]
ANGLES ±0°30'	
REMOVE ALL BURRS/SHARP W/ BREAK / R OF .003" TO .0005" UNLESS OTHERWISE NOTED	
DIAS CONCENTRIC <.003 T.I.R.	
DO NOT SCALE PRINT	

DRAWN	DATE
MCCORMICK	4/13/15
CHECKED	DATE
MCCORMICK	4/13/15
ENG. APPR.	DATE
T.KUHN	4/13/15

Phone: 603-222-2256 Fax: 603-222-2259  
 150 Dow Street, Manchester, NH 03101

TITLE

**ADAPTER, 1.85mm-m/f, DC-67GHz, 20W**

SIZE	CAGE CODE	DRAWING NUMBER	REV
B	3HT76	6782-0000-00	X2
SCALE	PLATED AREA SQ. IN	SHEET 1 OF 1	

THESE DRAWINGS AND SPECIFICATIONS ARE THE PROPERTY OF XMA CORP. OR OMNI SPECTRA AND SHALL NOT BE REPRODUCED, COPIED NOR USED - IN WHOLE OR IN PART - AS A BASIS FOR THE MANUFACTURE OR SALE OF OTHER ITEMS WITHOUT THE EXPRESS WRITTEN PERMISSION OF XMA CORP.