

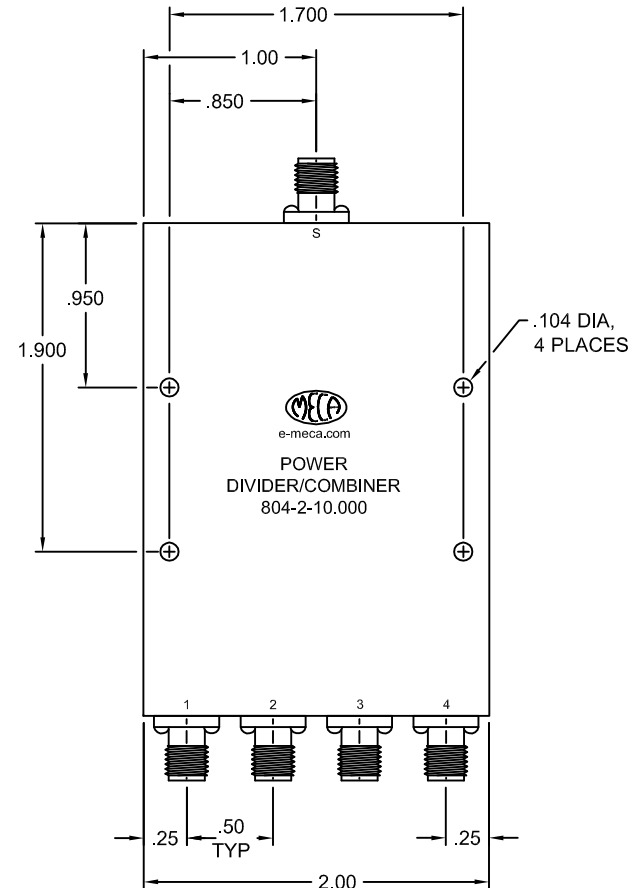
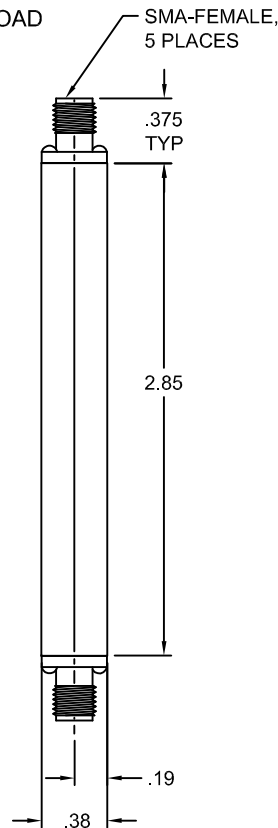
ELECTRICAL SPECIFICATIONS

FREQUENCY RANGE (GHz):	2.000-18.000
IMPEDANCE (NOMINAL):	50 Ohms
VSWR: INPUT:	1.50:1 TYP/1.60:1 MAX
OUTPUT:	1.40:1 TYP/1.50:1 MAX
INSERTION LOSS (dB):	1.8 TYP/2.0 MAX
AMPLITUDE BALANCE (MAX):	0,6 dB
ISOLATION (dB):	17 TYP/15 MIN
PHASE BALANCE (MAX):	6 DEGREES
RF POWER (TOTAL MAX):	30 WATTS INPUT WITH LOAD
* (AS DIVIDER ONLY)	VSWR 1.2:1 OR BETTER


* NOTE: SEE APPLICATION NOTE
MAP-801 (WWW.E-MECA.COM)

MECHANICAL SPECIFICATIONS

CONNECTORS:	SMA-FEMALE, STAINLESS STEEL, PASSIVATE
CONNECTOR PINS:	BERYLLIUM COPPER, GOLD PLATE
HOUSING:	ALUMINUM, RoHS COMPLIANT IRIDITE
INSULATORS:	PTFE, VIRGIN ELECTRICAL GRADE
TEMPERATURE:	-55°C TO +85°C
WEIGHT:	3.4 oz.



B	SEE DCN # 080723-2	07/25/08	GQ	RR	
LTR	PG	DESCRIPTION	DATE	DR	APP

MATERIAL: SEE ABOVE		UNLESS OTHERWISE SPECIFIED, DIMENSIONS ARE IN INCHES		 ELECTRONICS, INC. DENVER, NEW JERSEY e-meca.com
FINISH: SEE ABOVE		TOLERANCES 2 PLACES: ±.02 3 PLACES: ±.010 ANGLES: N/A		
DRAWN: NL	DATE: 03/28/06	TIR: N/A		TITLE 4-WAY, IN-PHASE (0 DEGREE), POWER DIVIDER/COMBINER, SMA-FEMALE
APPROVED: JS	DATE: 03/28/06	SCALE: NTS	SIZE A	
SHEET: 1 OF 1		CODE IDENT. NO. 22424	DRAWING NO. 804-2-10.000	REV B