

**CATALOG NUMBER**

H018-K92-04

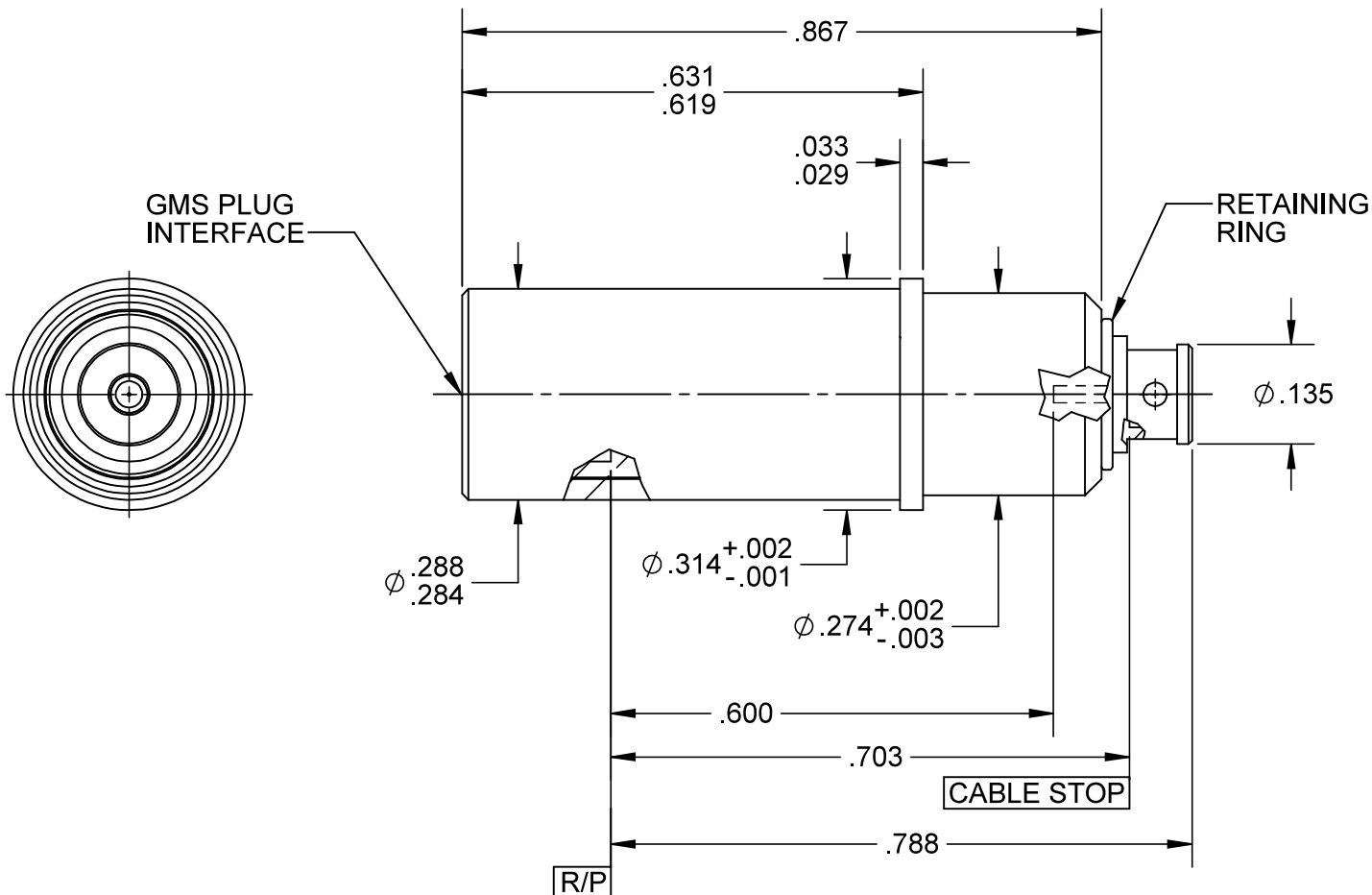
**MATERIAL AND FINISH**

**OUTER HOUSING:** CRES 303; PASSIVATED

**CENTER CONTACT AND GMS HOUSING:** BeCu; GOLD PLATE 50-100 MICROINCHES OVER NICKEL PLATE 50 MICROINCHES MIN.

**DIELECTRICS:** VIRGIN PTFE

**SPRING AND RETAINING RING:** STAINLESS STEEL



**NOTES:**

- CONNECTOR COMPONENTS ASSEMBLED AT COC RF USING FIXTURES:  
 MGTA-1420 BASE  
 MGTA-2000-76 PUNCH  
 TOGGLE PRESS

CORNING RESTRICTED - This drawing and any data contained herein is the proprietary and confidential information of Corning. Neither receipt nor possession of this drawing provides any right to duplicate, use, or disclose any information contained herein except with the express written consent of Corning.  
 EXPORT CONTROL - This document contains information within the purview of the Export Administration Regulations (EAR), 15 CFR 730-774, and may be export controlled.

<b>APPROX. WEIGHT:</b>	5.0250 grams	<b>SIGNATURES</b>	<b>INIT</b>	<b>DATE:</b>
<b>TOLERANCE:</b>	.XX ±.010 .XXX ±.005 ANGULAR ±5°	<b>DRAWN:</b>	WBW	4/23/18
		<b>CHECKED:</b>	BLK	
		<b>APPROVED:</b>	TEF	

**CONTACT, SOCKET, SIZE 8, FLOAT MOUNT, PER AS39029/59 WITH GMS MALE INTERFACE FOR STORM 423-0004-002 S/R CABLE**

**CAGE CODE:** 82316  
**SCALE:** 4:1  
**REVISION:** D



PLANT OF ORIGIN  
 CORNING PHOENIX  
 PLANT: (623)245-1050  
 CUSTOMER SERVICE:  
 (800) 651-8869

**SOURCE FILE:** SK-6110

**DWG. NO.:** OL-H018-K92-04

**ASSY. PROC.:** -