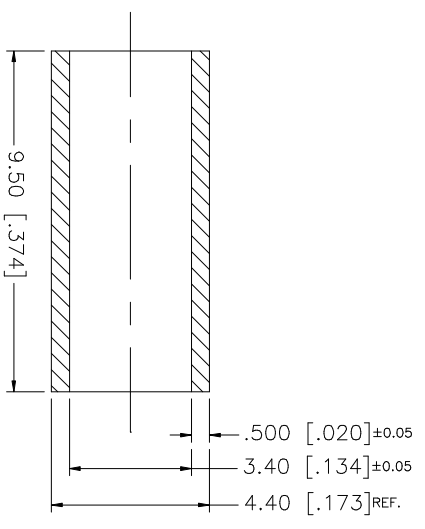


REV.	DATE	DESCRIPTION
B	04/31/03	UPDATE DRAWING FORMAT



REMARK:  
 ROCKWELL HARDNESS OF  
 55 MAX. ON 15-T SCALE  
 (HEAT TREAT FOR 30 MIN.  
 AT 900°F BEFORE PLATING)

QTY	FINISH	MATERIAL	DESCRIPTION
1	NICKEL	COPPER	FERRULE

APPROVALS	DATE
DRAWN G.R.S.	04/31/03
CHECKED	
ISSUED	
SHEET 1 OF 1	

UNLESS OTHERWISE SPECIFIED DIMENSIONS ARE IN MILLIMETERS DIMENSIONS IN [ ] ARE IN INCHES AND FOR CUSTOMER REFERENCE ONLY.
UNLESS OTHERWISE SPECIFIED TOLERANCES FOR MILLIMETERS ARE: 0.5 - 8mm ± 0.20mm 8 - 30mm ± 0.40mm 30 - 120mm ± 0.50mm
UNLESS OTHERWISE SPECIFIED TOLERANCES FOR INCHES ARE: .020 - .315 = ± 0.007" .315 - 1.180 = ± 0.015" 1.180 - 4.724 = ± 0.020"

CAD FILE	C:/MISC/FRL-SMA-316DNKLDWG
DWG. NO.	FRL-SMA-316DNKLDWG
REV.	B
SIZE	A
SCALE	NA

PART NO.	DESCRIPTION
FRL-SMA-316DNKL	FERRULE-SMA-316DNKL