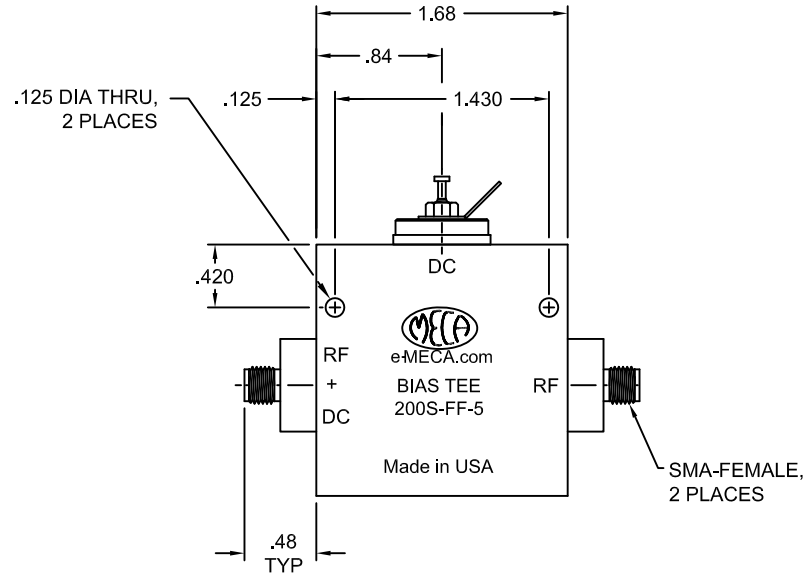
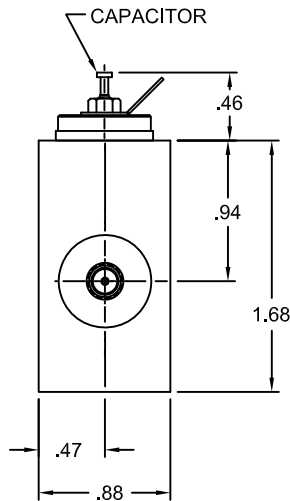
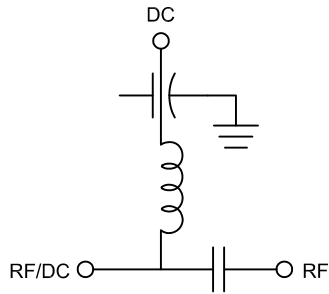



ELECTRICAL SPECIFICATIONS

FREQUENCY RANGE (GHz):	0.500-2.500
IMPEDANCE (NOMINAL):	50 Ohms
VSWR: INPUT/OUTPUT:	1.25:1 TYP/1.40:1 MAX
INSERTION LOSS (dB):	0.25 TYP/0.50 MAX
DC VOLTAGE:	100 VDC MAX
DC CURRENT:	7 AMPS MAX
ISOLATION (RF TO BIAS PORT)(dB):	30 TYP/25 MIN
RF POWER (TOTAL MAX):	100 WATTS AVG 1 KW PEAK

MECHANICAL SPECIFICATIONS

CONNECTORS:	SMA-FEMALE, STAINLESS STEEL, PASSIVATE
CONNECTOR PINS:	BERYLLIUM COPPER, GOLD PLATE
HOUSING:	ALUMINUM, RoHS COMPLIANT IRIDITE
INSULATORS:	PTFE, VIRGIN ELECTRICAL GRADE
TEMPERATURE:	-55°C TO +85°C
O-RING:	SILICONE RUBBER
WEIGHT (APROX):	4.5 oz.



					MATERIAL: SEE ABOVE		UNLESS OTHERWISE SPECIFIED, DIMENSIONS ARE IN INCHES		 ELECTRONICS, INC. DENVER, NEW JERSEY e-meca.com	
					FINISH: SEE ABOVE		TOLERANCES 2 PLACES: ±.02 3 PLACES: ±.010 ANGLES: N/A			
DRAWN: GQ			DATE: 11/07/08		TIR: N/A		SCALE: NTS		SIZE A	
APPROVED: RR			DATE: 11/07/08		SHEET: 1 OF 1					
A		NEW	11/07/08	GQ	RR	TITLE BIAS TEE, SMA FEMALE, WEATHER PROOF		CODE IDENT. NO. 22424	DRAWING NO. 200S-FF-5	REV A
LTR	PG	DESCRIPTION	DATE	DR	APP					