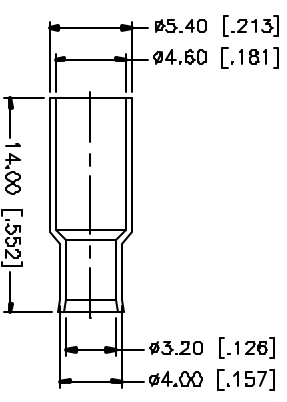
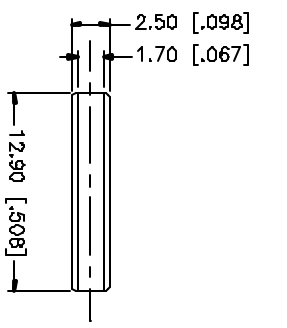
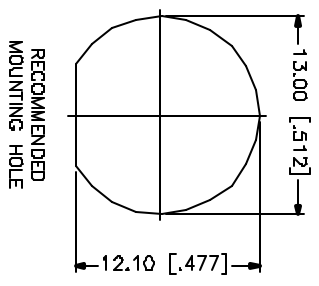
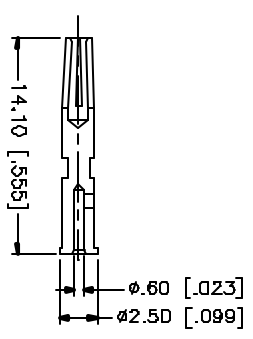
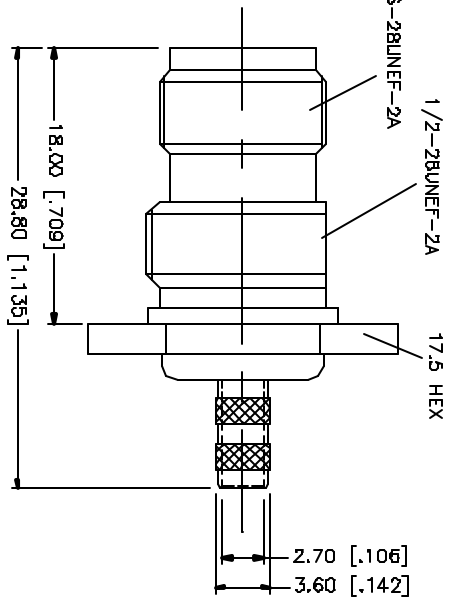
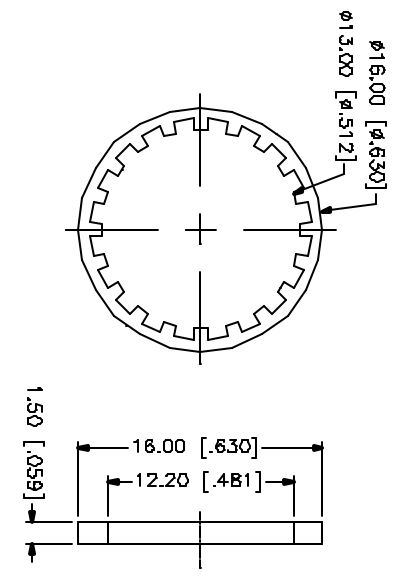
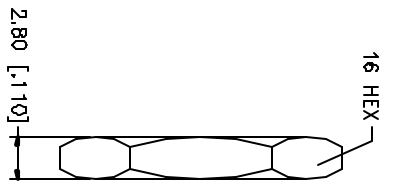
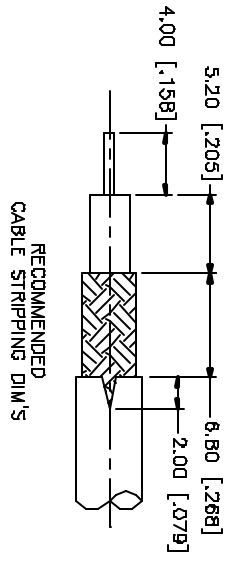


REV.	DATE	DESCRIPTION
A	03/20/05	UPDATE DRAWING FORMAT



QTY	FINISH	MATERIAL	DESCRIPTION
1	NICKEL	COPPER	FERRULE
1	NATURAL	DELFIN	INSULATOR
1	NICKEL	BRASS	HEX NUT
1	NICKEL	BRASS	LOCK WASHER
1	RED	SILICONE	GASKET
1	GOLD	BER. COPPER	CONTACT PIN
1	NATURAL	DELFIN	INSULATOR
1	NICKEL	BRASS	BODY

APPROVALS	DATE
G.R.S.	03/20/05

DO NOT SCALE DRAWING
MASS TENSILE STRENGTH: MINIMUM 1000 MPa (145,000 PSI) FOR ALL PARTS EXCEPT THE INSULATOR AND THE CONTACT PIN. FOR THE INSULATOR, THE TENSILE STRENGTH SHOULD BE 0.5 - 0.8mm ± 0.025mm B - 3.0mm ± 0.40mm 30 - 120mm ± 0.50mm
MASS TENSILE STRENGTH: MINIMUM 1000 MPa (145,000 PSI) FOR ALL PARTS EXCEPT THE INSULATOR AND THE CONTACT PIN. FOR THE INSULATOR, THE TENSILE STRENGTH SHOULD BE 0.5 - 0.8mm ± 0.025mm B - 3.0mm ± 0.40mm 30 - 120mm ± 0.50mm
1.180 - 4.724 ± 0.020*
1.180 - 4.724 ± 0.020*

CAD FILE	DWG. NO.	REV.	SIZE	SCALE
C:/122/122358.DWG	122358.DWG	A	A	NA

PART DESCRIPTION	PART NO.
TNC BULKHEAD GRIMP JACK (FOR RG-174/U, 316/U DOUBLE BRAID)	122358