

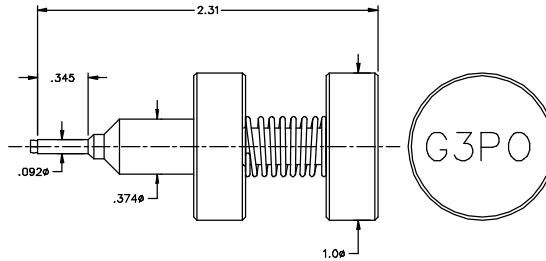
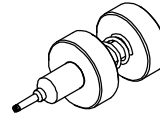
DATE REVISED: 2/19/98

CATALOG NUMBER

R095-A99-01

MATERIAL AND FINISH

REAR INSERT, HEAD,
AND PLUNGER: CRES 303; PASSIVATED
COLLET: BeCu; BRIGHT ALLOY PLATE
FRONT BODY: 17-4 PH STAINLESS STEEL; PASSIVATED
SPRING: STAINLESS STEEL



This drawing and any data contained herein is the property of Corning Gilbert Inc., and constitutes and contains proprietary and confidential information. Neither receipt nor possession of this drawing confers or transfers any right to duplicate, use or disclose any information contained herein except as expressly authorized by Corning Gilbert Inc.

G3PO LOW PROFILE
INSTALL/REMOVAL
TOOL

IDENT CODE:
82316
REVISION: D

Corning Gilbert Inc.

SOURCE FILE: SK-2358

DWG. NO.: OL-R095-A99-01

ASSY. PROC.: -